



LES INDUSTRIES MAÎTRE COMPACTEUR

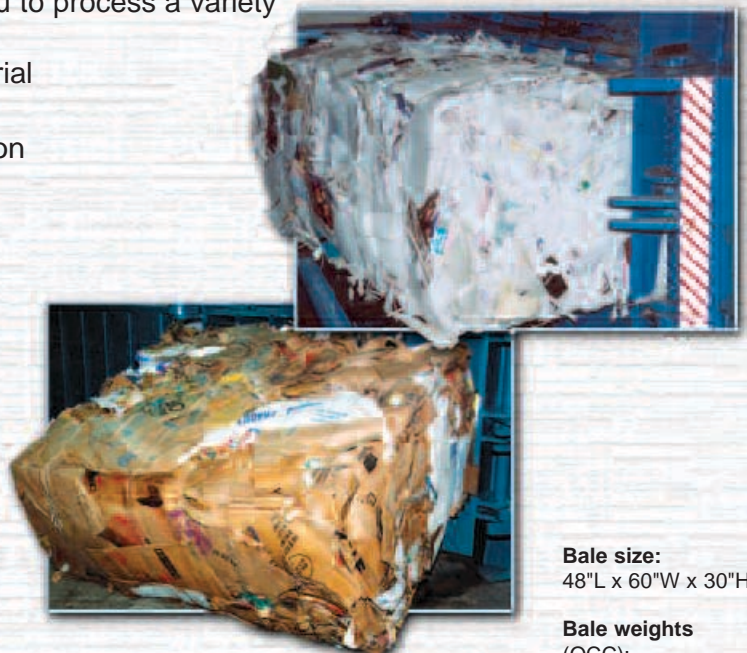


The Manual Horizontal Series Balers can be fitted with an Above Floor or a Pit Conveyor.

Multi-Material Manual-Tie Balers

Manual-Tie closed end horizontal baler allows you to process a variety of material such as PET, aluminum or steel cans, paper, plastics, OCC, newsprint, and similar material with no fluffing or preconditioning. They feature:

- ▼ Full penetration ram for maximum compaction and full bale ejection
- ▼ Programmable, UL Listed controller permits automatic or manual operation
- ▼ Twin cross-cylinders with 20 HP motor
- ▼ Cycle time of 34 seconds
- ▼ Bale size 30" H x 48" L x 60" W
- ▼ Wire guides for quick and easy ties
- ▼ Wire guides designed for quick clean-out



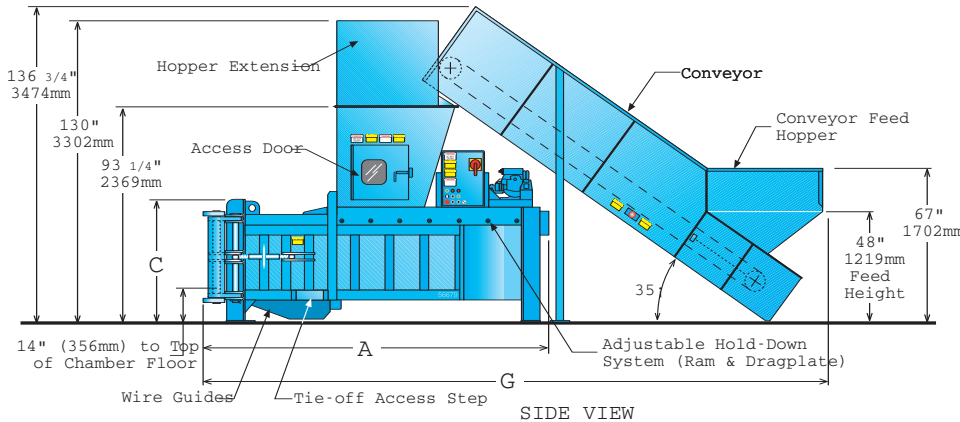
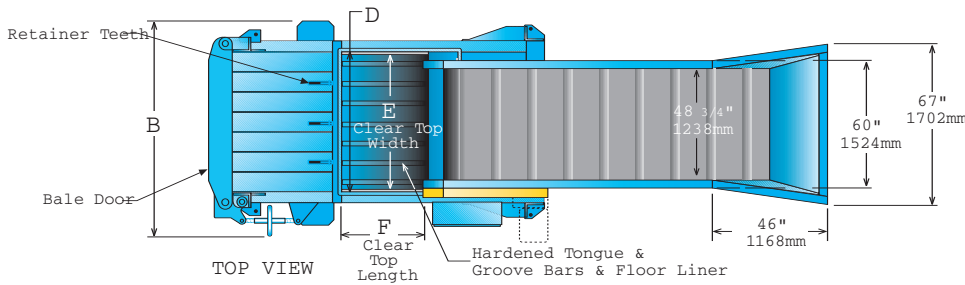
Bale size:
48"L x 60"W x 30"H

**Bale weights
(OCC):**
1100–1400 lbs.

Multi-Material Horizontal Balers

Standard Features & Benefits:

- ▼ Hardened steel tongue & groove floor and side liners
- ▼ Adjustable cold roll bar assembly hold-down system with integrated drag plate for ram
- ▼ Programmable controller permits automatic or manual control
- ▼ Variable speed conveyor
- ▼ High efficiency power unit with horsepower limited, pressure compensated piston pump
- ▼ Hopper with access door with interlock and viewing port
- ▼ Electrical disconnect
- ▼ Reversible and adjustable bolt-on shear blade
- ▼ Welded body shear blade and serrated ram shear bar
- ▼ Full penetration ram for maximum compaction and complete bale ejection
- ▼ Nylon runners for smooth ram operation
- ▼ Dual interlock on bale chamber door
- ▼ Lower photocell control
- ▼ Wire guides for tying through the bale chamber door
- ▼ Wire guides designed for quick clean-out
- ▼ Totally enclosed, fan-cooled (TEFC) motor for worry-free, efficient operation
- ▼ Available with optional hydraulic bale door release



Specifications:	Gemini 3560	Gemini-Xtreme
A Structure Length	147 1/4" (3740 mm)	149" (3785 mm)
B Structure Width	86 7/8" (2207 mm)	92 1/2" (2350 mm)
C Body Height	51 1/8" (1299 mm)	52 1/2" (1334 mm)
D Charge Chamber Width	60" (1524 mm)	60" (1524 mm)
E Charge Box Width	57" (1448 mm)	54 3/4" (1391mm)
F Charge Box Length.....	35" (889 mm)	35" (889 mm)
G Structure Length with Conveyor.....	266" (6756 mm)	269" (6833 mm)
Hydraulic / Electric Equipment:		
Programmable Controller	Standard	Standard
Motor	20 hp (15 kW)	20 hp (15 kW)
Control Voltage	460 VAC, 3 phase	460 VAC, 3 phase
Control Panel	UL Listed	UL Listed
Pump (4000 psi rated).....	34 gpm (129 L/min.)	34 gpm (129 L/min.)
Cylinders (2) Bore	6" (152mm)	6" (152mm)
Rod.....	4" (102mm)	4" (102mm)
Stroke	57" (1448mm)	57" (1448mm)
Oil Reservoir Capacity	100 gal. (379 liters)	100 gal. (379 liters)
Performance Characteristics:		
Standard Operating Pressure.....	2450 psi (169 bar)	3000 psi (206 bar)
Platen Force	120,000 lbs. (534 kN)	147,300 lbs. (655 kN)
Platen Pressure	68 psi (469 kPa)	81.8 psi (564 kPa)
Cycle Time.....	34 seconds	34 seconds
Nominal Baler Size.....	30"H x 48"L x 60"W (762 x 1219 x 1524)	30"H x 48"L x 60"W (762 x 1219 x 1524)
Bale Weight (OCC)	Up to 1250 lbs. (567 kg)	Up to 1400 lbs. (635 kg)
Baler Weight	12,000 lbs. (5443 kg)	17,500 lbs. (7938 kg)